



HLT41120 Certificate IV in Health Care

Qualification information



NATIONALLY RECOGNISED
TRAINING



Contents

About the course	2
• Career Opportunities	
• What are the course pre-requisites?	
• Recommendations prior to enrolling	
Course content	3
• How is the course delivered?	
Course Structure	4
• Units of Competency	
Student Journey	5
Face-to-face training	6
• About the face-to-face training	
• How long is the face-to-face training?	
• Where are the in-class sessions held?	
Clinical Hours	7
• Meeting Clinical Hours requirement	
• St John WA Volunteering	
Course Requirements	8
• Prior to enrolment	
• Unique Student Identifier (USI)	
Applying for the HLT41120 Certificate IV in Health Care	9
• I would like to apply	
• How do I pay?	
• I need help	
Further information	10
• St John WA RTO Policies and Standards for RTOs	
• St John WA RTO Participant Handbook	
• First Aid Course Terms and Conditions	
• St John WA Course Fees Policy	
• St John WA Unique Student Identifier (USI) Requirements	
• Student Support Services Available	
• Complaints and Appeals Policy	
• Privacy Policy	



About the Course

HLT41120 Certificate IV in Health Care (Cert IV)

Nationally Accredited

Course: HLT41120 Certificate IV in Health Care

Duration: 12 months

Delivery: Blended learning

Cost: \$5,500 AUD

This qualification is suitable for individuals who want to provide initial pre-hospital and out of hospital basic health care.

Career Opportunities

This Cert IV course applies to a variety of career roles including:

- ✦ Emergency Services Officer (ESO)
- ✦ Industrial medic
- ✦ Patient transport officer
- ✦ Medical Emergency Services Officer (MESO)

What are the course pre-requisites?

There are no pre-requisites to enrol into the Cert IV course.

Applicants for the Cert IV course are not required to have any previous experience within the health industry; however, previous skills and knowledge in the health industry or completion of a first aid course will be beneficial.

Recommendations prior to enrolling

- ✦ Physically capable of lifting 16KG-20KG
- ✦ Physically capable of kneeling for extended periods of time
- ✦ Have a sound level of Math and English



Course Content

This course covers clinical skills, patient assessment skills and emergency care. Topics covered in the course include but are not limited to:

- ✳ Human anatomy and Physiology
- ✳ Communication
- ✳ Medical terminology
- ✳ Legal and ethical obligations

How is the course delivered?

Online Pre-Course Learning

Online learning completed prior to face-to-face training, including multiple choice quizzes

Face-to-Face Practical Training

Compulsory hands-on practical training and in-class assessment delivered by experienced Trainers and Assessors

Post-Course Learning

Online post-course learning, quizzes, and assignments

Post-Course Clinical Hours

Supervised clinical hours completed in students' own workplace or volunteer setting

All course material for self-directed learning is provided via an online Learning Management System. This includes:

- ✳ Course learning material
- ✳ Assessments and assignments
- ✳ Quizzes and knowledge checks
- ✳ Information and resources relating to in-class practical activities

Students are provided with access to the online Learning Management System upon enrolment to complete Cert IV coursework.



Course structure

Units of Competency

The table below outlines the 16 units of competency required to complete the Cert IV qualification.

Unit type key:

- Core – Units that are specified within the Training Package packaging rules and are not optional.
- Elective – Units selected from a training package to make up the required volume of a qualification, allowing for flexibility in training to meet specific industry, enterprise, or learner needs.
- Selected elective – Following packaging rules, elective units of competency selected by St John WA to form the remaining elective unit requirement for this Cert IV.

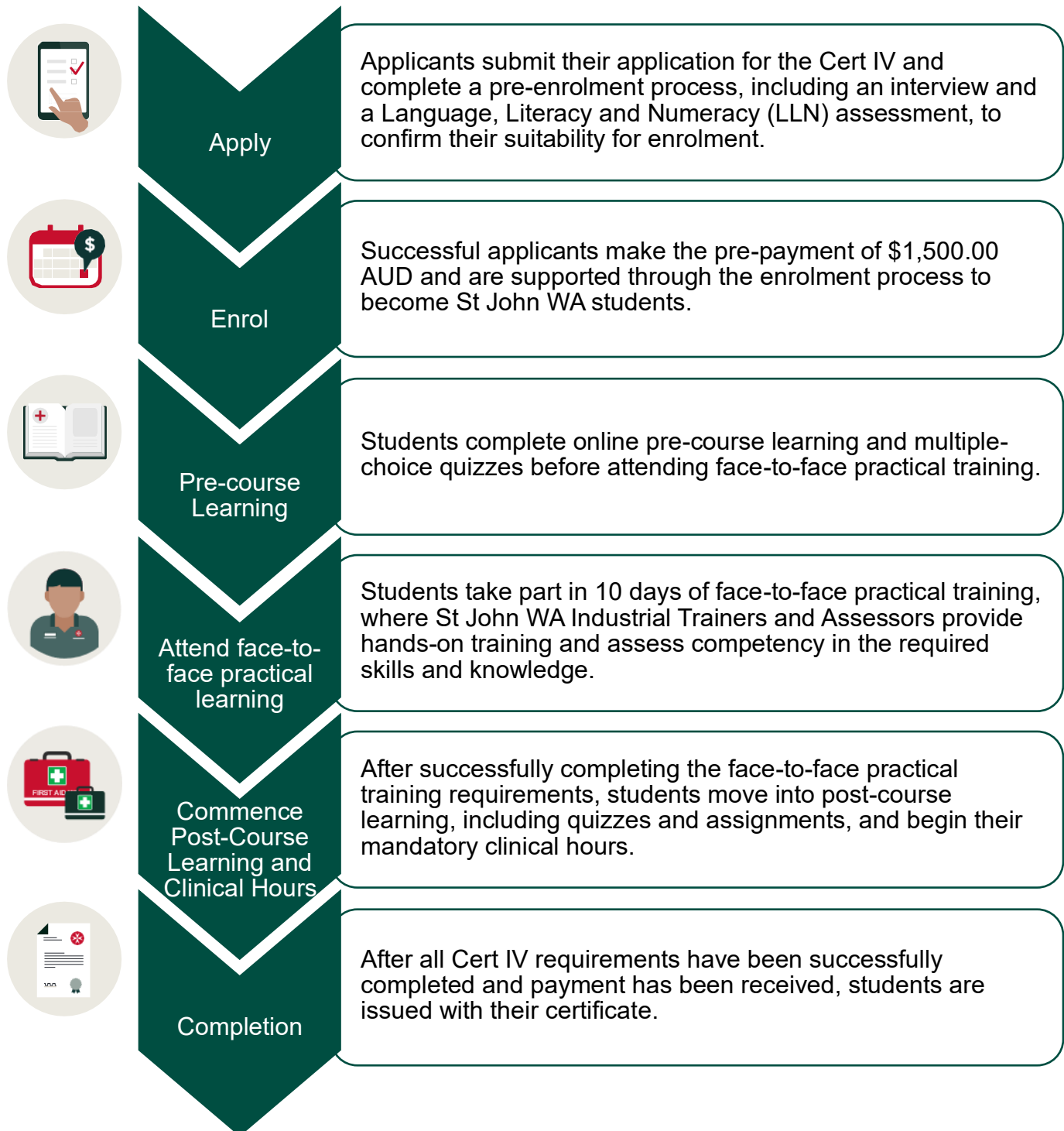
Unit code	Unit title	Unit type
HLTAAP002	Confirm physical health status	Core
HLTINF006	Apply basic principles of infection prevention and control	Core
HLTWHS002	Follow safe work practices for direct client care	Core
HLTWHS006	Manage personal stressors in the work environment	Core
CHCDIV001	Work with diverse people	Core
HLTOUT001	Implement safe access and egress	Core
HLTOUT008	Manage a scene	Core
HLTOUT004	Assess and deliver basic clinical care	Core
HLTOUT010	Communicate in complex situations to support health care	Core
BSBMED301	Interpret and apply medical terminology appropriately	Elective
HLTWHS005	Conduct manual tasks safely	Elective
BSBFLM303	Contribute to effective workplace relationships	Elective
CHCLEG001	Work legally and ethically	Elective
PUAME008	Provide pain management	Selected elective
HLTAID014	Provide advance first aid	Selected elective
*HLTAID015	Provide advance resuscitation and oxygen therapy	Selected elective

* This unit of competency has a pre-requisite requirement of HLTAID011 Provide First Aid. Students will complete the HLTAID011 Provide First Aid unit as part of the Cert IV.

For further information please see training.gov.au - [HLT41120 - Certificate IV in Health Care](#)



Student Journey





Face-to-Face Training

About the face-to-face training

Face-to-face training is in-class training sessions consisting of classroom-based theory learning with practical activities and assessments facilitated by St John WA Industrial Trainers and Assessors.

Students will learn the skills and knowledge to conduct patient clinical assessment and provide basic clinical care in a pre-hospital or out-of-hospital environment.

It is compulsory for students to attend the full duration of the in-class training session days.

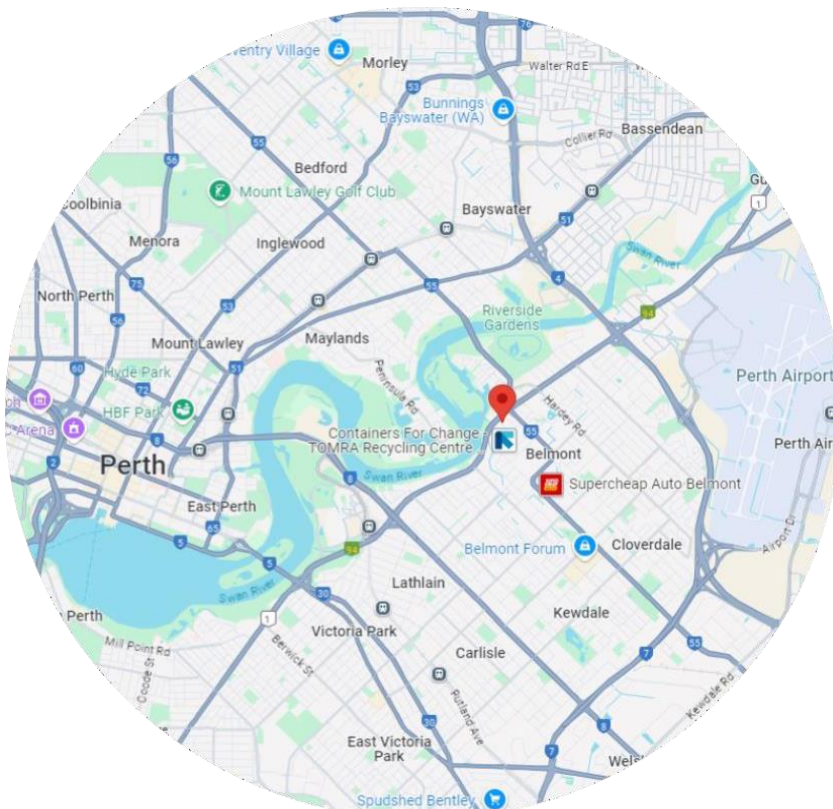
How long is the face-to-face training?

The in-class training sessions are conducted over a two-week block. This is Monday-Friday for weeks one and two. This accumulates to **10 days of in-class training sessions**.

Where are the in-class sessions held?

Training is facilitated at St John WA training centres, where students have access to appropriate resources and Industrial Trainers and Assessors. Current classes are being held at our new training centre in Belmont.

- ✳ St John WA Belmont Training Centre, 209 Great Eastern Hwy, WA, 6104
- ✳ Parking is in the gated area on Hehir Street





Clinical Hours

As per the packaging rules, it is a mandatory requirement of this Cert IV for students to complete a minimum of 80 clinical hours with practical experience in a clinical setting, under clinical supervision. The unit of competency *HLTOUT004 - Assess and deliver basic clinical care* details the clinical hours assessment requirement.

Students will need to complete the 80 clinical hours after attending and meeting the requirements of the in-class training component.

- ✳ **It is the responsibility of the students to secure a suitable workplace that will enable them to complete the required clinical hours.**

The clinical setting must allow students to undertake direct patient care activities, including clinical assessment and delivery of basic clinical care, in accordance with the assessment requirements of the unit *HLTOUT004 Assess and deliver basic clinical care*.

Meeting Clinical Hours Requirement:

1. Own Workplace or other healthcare provider

Students may complete their required clinical hours (minimum of 80 hours) under clinical supervision within their own workplace or with another recognised healthcare or emergency response provider, provided the setting meets the requirements of a suitable clinical environment. This may be completed in a paid or volunteer capacity.

2. St John WA Volunteering

Students may apply to complete their required clinical hours through St John WA Volunteering. This is a separate process from enrolment in the qualification and is subject to meeting volunteer eligibility and approval requirements.

St John WA volunteering opportunities are available in both metropolitan and regional Western Australia, depending on operational needs. Availability is not guaranteed.

Students can only undertake clinical hours through this pathway if they have been accepted as St John WA volunteers.

To find out more about St John WA volunteering, please call volunteering sourcing on 1800 069 393 or refer to the St John WA Volunteering website via [St John WA Clinical Volunteer opportunities](#)

Examples of clinical tasks performed during clinical hours

- Make initial incident and patient assessment
- Plan basic pre-hospital or out-of-hospital patient care
- Implement basic patient care procedures
- Monitor basic patient care
- Handover patient to a healthcare professional, facility or service



Course Requirements

Prior to enrolment, applicants must:

- ✳ Complete an application form
- ✳ Be an Australian citizen or Australian permanent resident
- ✳ Be the minimum age of 18 years old
- ✳ Provide a valid Unique Student Identifier (USI)
- ✳ Complete a Language, Literacy, Numeracy and Digital (LLND) skills assessment (provided by St John WA during application process)
- ✳ Confirm at enrolment how they intend to complete the 80 Clinical hours
- ✳ Pre-pay \$1,500.00 AUD to secure enrolment

Unique Student Identifier (USI)

From 1 January 2015, every student undertaking nationally recognised training in Australia is required to hold a Unique Student Identifier (USI). A USI is mandatory to obtain your qualification from St John WA or any other Registered Training Organisation (RTO).

The USI was introduced by the Australian Federal Government and is linked to the National Vocational Education and Training (VET) data collection. It allows all records of your nationally recognised training and qualifications to be stored together in a secure online account, which stays with you for life.

Important information

- You must have a valid USI to be enrolled in the Cert IV course with St John WA.
- Without a valid USI, St John WA cannot enrol you or issue your AQF certificate upon completion.
- If you believe you are eligible for a USI exemption, this must be communicated during the application process and supported by evidence issued by the Student Identifiers Registrar.

Create or find your USI

- Creating a USI is free and only needs to be done once.
- You may already have a USI if you have previously completed nationally recognised training since 2015.
- To create or locate your USI, visit the official Australian Government website: <https://www.usi.gov.au>

St John WA USI information

For St John WA-specific information about USI requirements, please visit:

<https://www.stjohnwa.com.au/first-aid-training/participant-information/unique-student-identifier>



Applying for the HLT41120 Certificate IV in Health Care

I would like to apply

If you are interested in applying for the Cert IV course, please complete the *HLT41120 Certificate IV in Health Care Application Form*

How do I pay for the Cert IV?

The total cost of the course is \$5,500.00 AUD. A pre-payment of \$1,500.00 AUD will be required to secure enrolment. The remaining total is to be paid **after** completion of the face-to-face in-class training session. Certificates will not be issued until full payment is received. A payment plan can be discussed on a case-by-case basis.

Course fees more than \$1500.00 AUD are unable to be accepted prior to the face-to-face in-class sessions.

I need help

Any further queries regarding the Cert IV course, please do not hesitate to contact us.



Customer Care Team

Request: Student Support

Phone: (08) 9334 1233

Email:

traineroperations@stjohnwa.com.au

Address: 209 Great Eastern Hwy,
Belmont WA 6104



Further Information

St John WA RTO Policies and Standards

[Policies and Standards for RTOs](#)

St John WA RTO Participant Handbook

[RTO Participant Handbook](#)

Terms and Conditions

[First Aid Courses - Terms and Conditions](#)

St John WA Course Fees

[Course Fees Compliance](#)

St John WA Unique Student Identifier (USI) Requirements

[Unique Student Identifier](#)

Student Support Services Available

[Training Information - St John WA](#)

Complaints and Appeals

[Complaints and Appeals Policy](#)

Privacy

[Privacy Policy](#)